



ALBANY  
HOUSE

---



AN EXCLUSIVE  
REDEVELOPMENT  
OF 2 LARGE  
VICTORIAN VILLAS

IN ONE OF DUBLIN'S  
MOST APPEALING  
ADDRESSES

---





**ALBANY**  
HOUSE

Albany House, a superb listed Victorian Villa has long been admired locally for its handsome facade and exquisite detailing. Cairn have sensitively restored and reconfigured this protected structure to create two magnificent homes as the centrepiece of their Albany scheme in the heart of Killiney. It represents a very rare opportunity to inhabit a piece of historical Dublin within a short distance of Killiney beach, parks and villages.

From 19th-century splendour to 21st-century technology, what you see today in the homes of Albany House is the result of a painstaking restoration and enlightened modernisation. These two villas offer all that is classic with the convenience of modern day living.

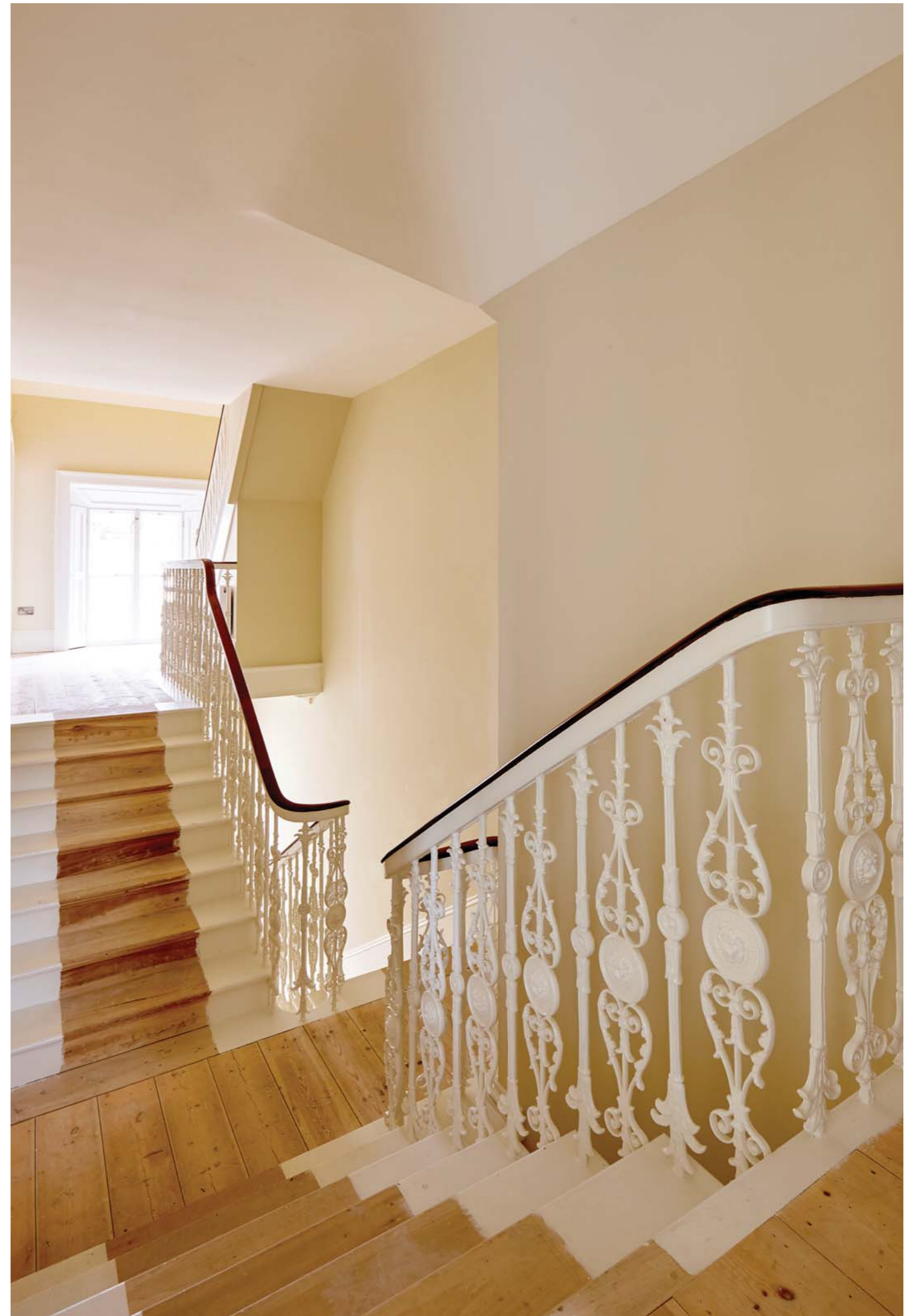


## No 19 Albany House

Number 19 extends to 203 sq.m and accommodates 3 light filled bedrooms along with a large attic room. The extensive kitchen/dining area with its generous floor to ceiling high and original cornicing is truly magnificent and ideal for entertaining. The vaulted basement offers generous storage space and the property also benefits from a meticulous landscaped south facing rear garden and private car parking.







# No 19

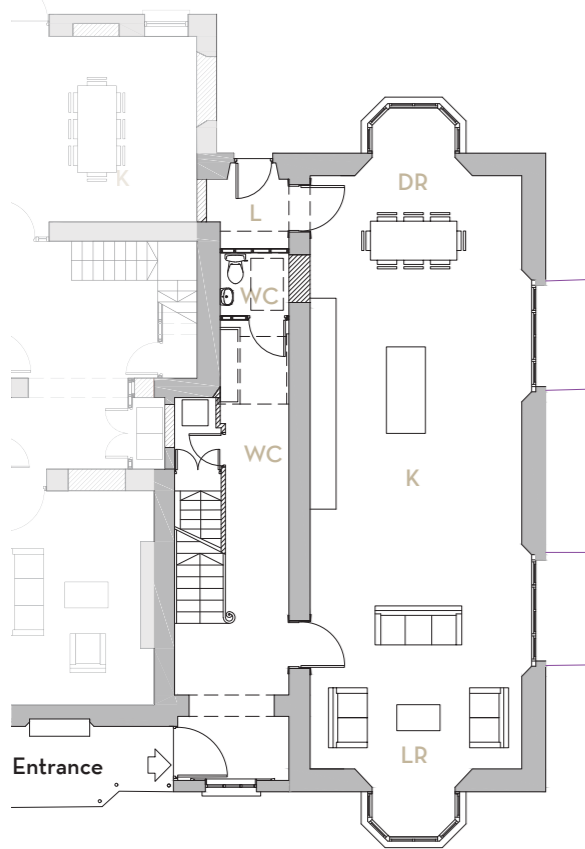
203sq.m / 2,185sq.ft

**LEGEND:**

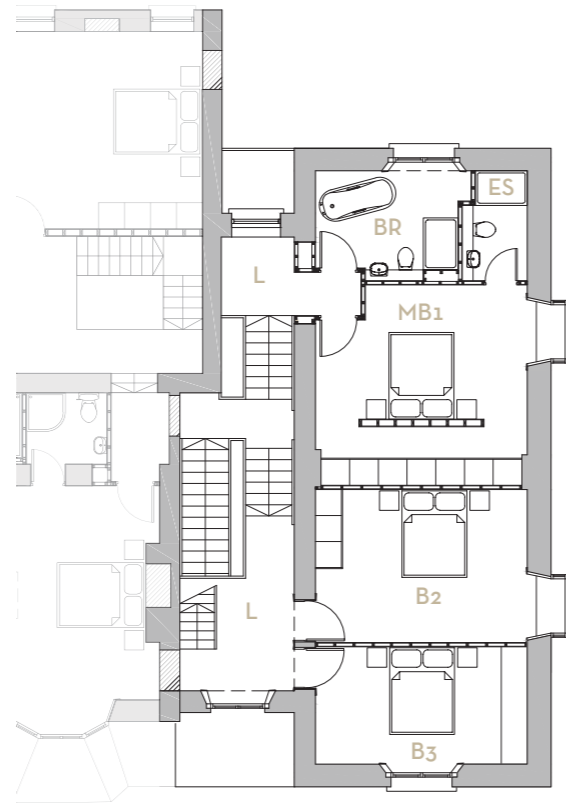
K Kitchen LR Living Room DR Dining Room UR Utility Room CR Cloakroom  
 L Lobby C Corridor ES En-suite BR Bathroom WC Toilet ST Storage  
 SY Study EH Entrance Hall MB Master Bedroom B Bedroom

# No 19

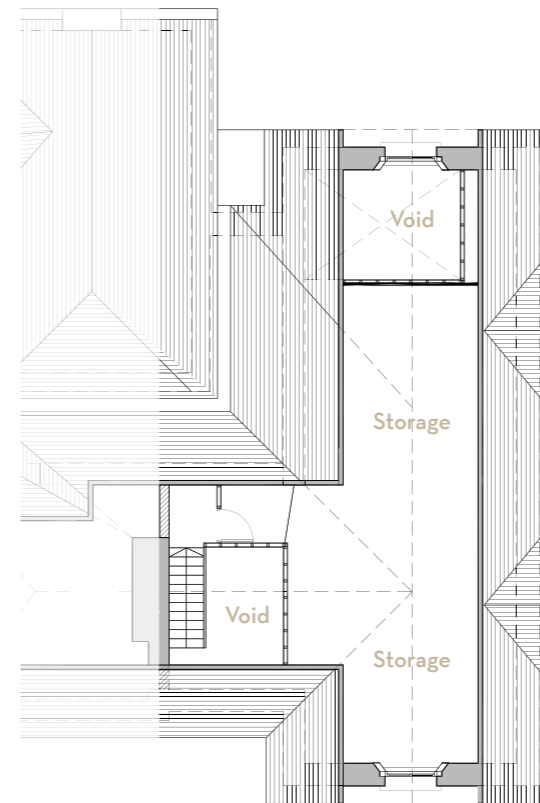
Additional attic and  
 basement level storage



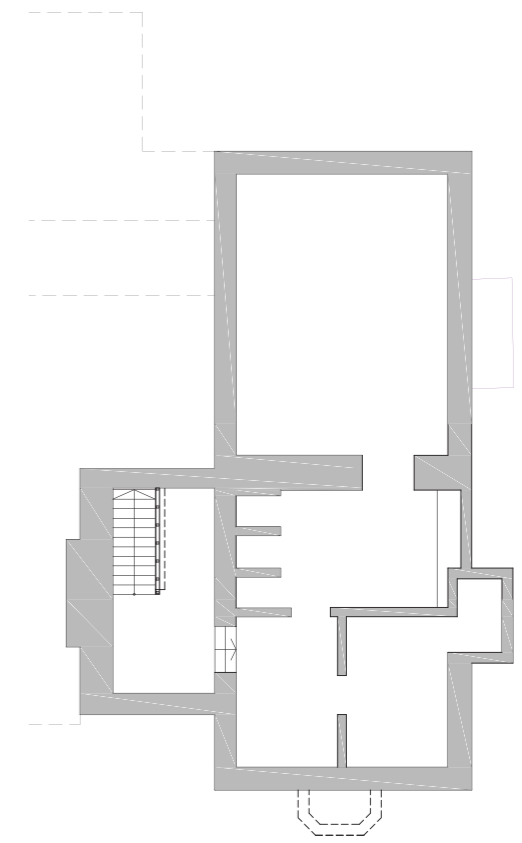
Ground Floor



First Floor



Attic Level



Basement Level

Floor plans are indicative only and subject to change.  
 In line with our policy of continuous improvement we reserve the right to alter the layout,  
 building style, landscaping and specifications at anytime without notice.



## No 18 Albany House

The second home comprises of a 3 bedroom home extending to 185 sq.m and is a unique property with numerous reception rooms on the ground floor. A unique feature of this property is the loft space accessed via the master bedroom on the first floor.





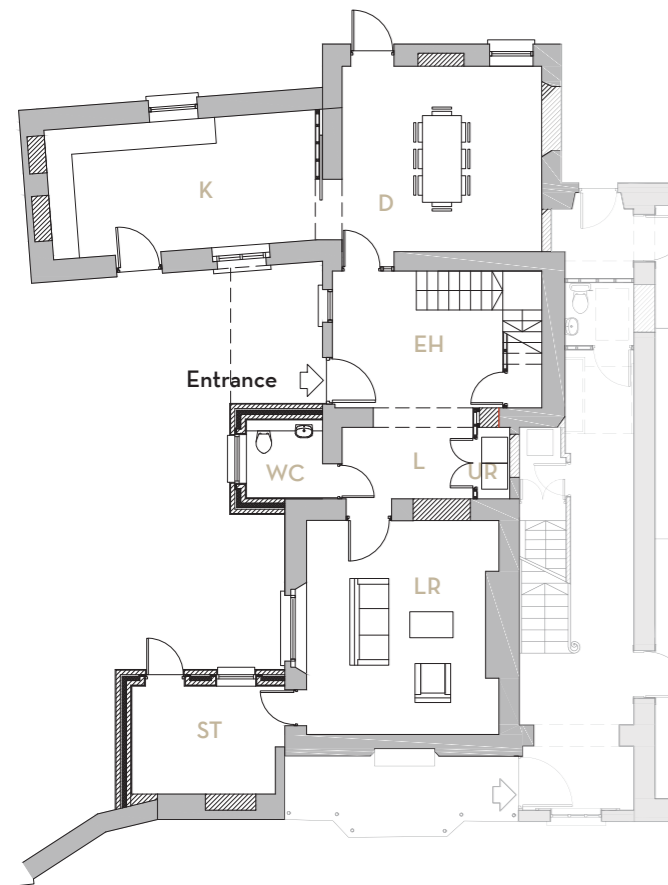


# No 18

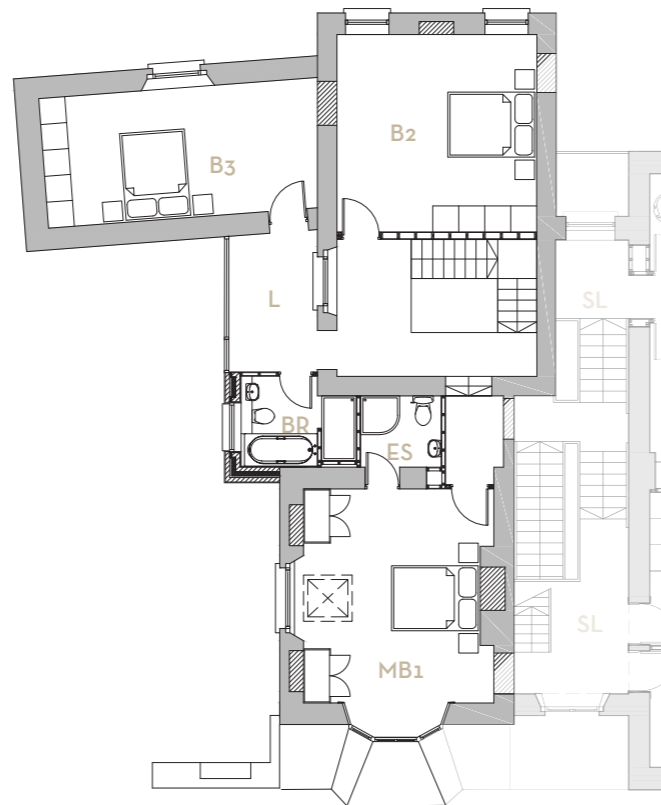
185sq.m / 1,991sq.ft

## LEGEND:

K Kitchen LR Living Room DR Dining Room UR Utility Room CR Cloakroom  
L Lobby C Corridor ES En-suite BR Bathroom WC Toilet ST Storage  
SY Study EH Entrance Hall MB Master Bedroom B Bedroom



Ground Floor



First Floor



## Features

A development by Cairn Homes where every detail is designed to enhance the way you live. The finest materials and fittings contribute to a home of unsurpassed luxury combined with thoughtful practicality. This superior quality design and the detailed construction meet a high standard of building regulations and are built in the traditional manner for quality and longevity.

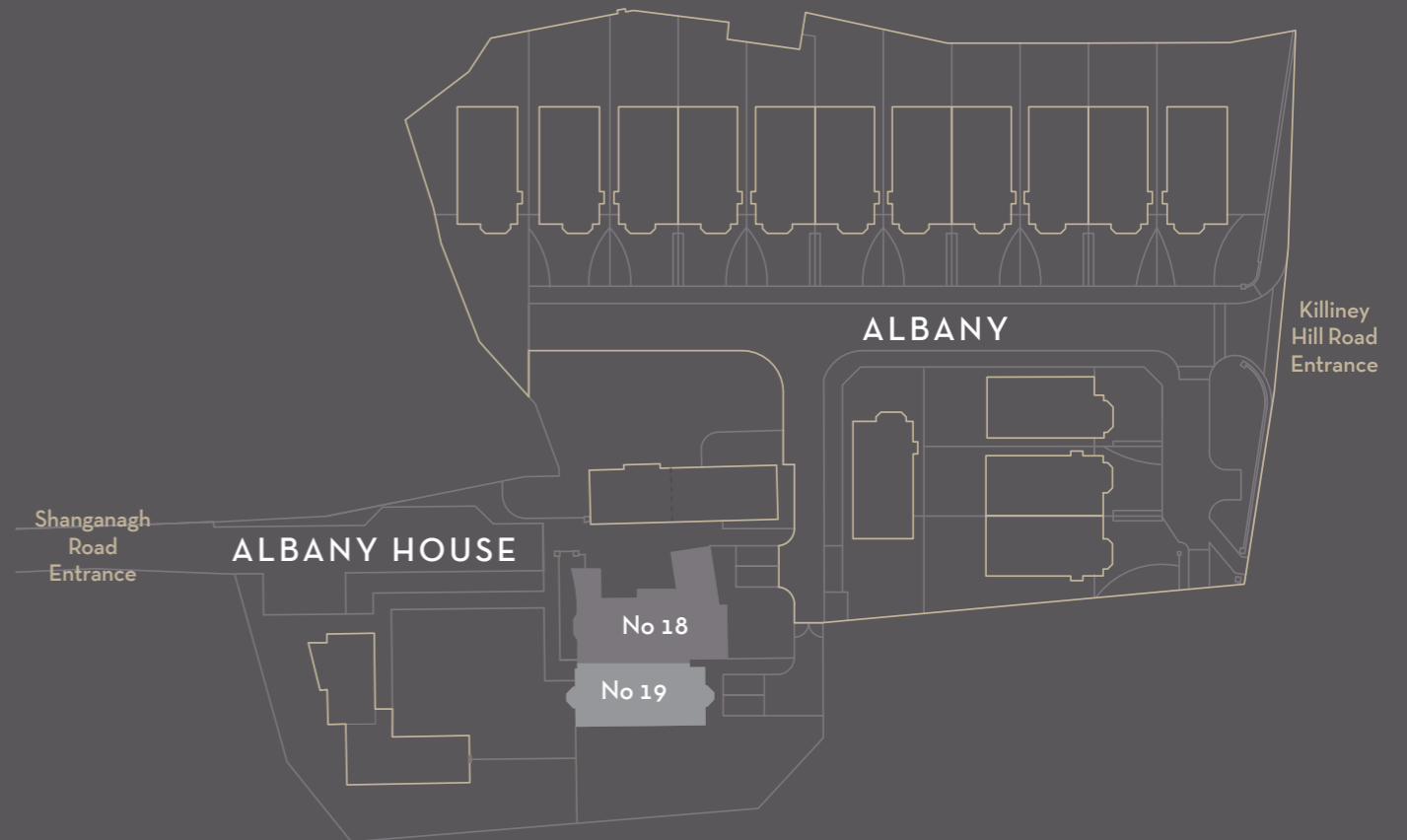
Floor plans are indicative only and subject to change.  
In line with our policy of continuous improvement we reserve the right to alter the layout, building style, landscaping and specifications at anytime without notice.





## SITE PLAN

Villa No.	Beds	Size sq.m	Size sq.ft
19	3	203	2,185
18	3	185	1,991



REGISTER YOUR INTEREST AT:  
ALBANYLODGE.IE

A DEVELOPMENT BY

**CAIRN**  
PLC

[WWW.CAIRNHOMES.COM](http://WWW.CAIRNHOMES.COM)

ALL ENQUIRIES



Licence No. 002183  
01 667 1888

**BER Exempt**

The information in this document including any plans, descriptions, specifications or dimensions in it or separately provided or communicated to prospective buyers are indicative and intended to act as a guide only. Any such information, plans, descriptions, specifications or dimensions (including also any information or details which may be given verbally) should not be relied upon as the basis for any contract and do not constitute any statement of fact or any representation or warranty. Any plans given are not to scale. Any measurements/areas are based on approximate gross internal areas (from internal block work excluding all internal finishes). They are estimates only and may vary. It should also be noted that Cairn may make changes to design, features, finishes and specifications. The finished home may therefore vary from the information provided. No employee or representative of Kelly Walsh or Sherry FitzGerald New Homes has the authority to bind Cairn in any way or to make or give any representation or warranty in relation to this development or any part of it.